



Guidelines for Research & Development Cell of Sikkim University

[Approved by the Executive Council in its 44th meeting held on 27.12.2023]

Introduction

The new National Education Policy (NEP) 2020 visualizes the promotion of quality and innovative research, which are important aspects to enhance quality education, within the Higher Education system. Societal challenges of our country can only be addressed by having a strong and vibrant higher education ecosystem with an emphasis on research, innovation, and technology development. The integration of Research, Innovation and Technology Development is the foundation of Atma-Nirbhar Bharat (Self-reliant India). Hence, the establishment of Research and Development Cell (RDC) in HEIs will enable attainment of targets of Atma-Nirbhar Bharat and is expected to play a pivotal role in catalyzing multidisciplinary/transdisciplinary and translational research culture mandated in NEP2020. Sikkim University (SU), a central university, has also establishment the Research and Development Cell (RDC), vide Notification OO-130/2023, dated: 17.04.2023, to promote the quality and innovative research within the University.

Vision

- To develop and strengthen the research ecosystem within SU, aligned with the provisions of NEP-2020.

Mission

- To create a conducive environment for enhanced research productivity.
- To encourage collaboration across industry, government, community-based organizations, and agencies at the regional, national and international levels.
- To facilitate greater access to research through mobilization of resources and funding

Objectives

1. To create an organizational structure with role-based functions of RDC, formulate Research Policy for SU, identify thrust areas of research, and form related cluster groups/ frontline teams/consortia of researchers.
2. To create enabling provisions in Research Policies for recruitment of research personnel, procurement of equipment, and financial management with adequate autonomy to the Principal Investigator(s) and disseminate research outcomes to stakeholders and the public at large.
3. To establish a special purpose vehicle to promote researchers and innovators, identify potential collaborators from industry, research organizations, academic institutions & other stakeholders for cooperation and synergistic partnerships.
4. To act as a liaison between researchers & relevant research funding agencies, extend guidance in preparation and submission of project proposals and post-sanctioning of the grants to oversee adherence to timelines.
5. To have better coordination among other cells/centers dealing with University-Industry Inter Linkage, Incubation, Innovation and Entrepreneurship Development and Intellectual Property Rights (IPR).
6. To develop an Institutional Research Information System for sharing the status of ongoing/ completed research projects/Programme, expertise & resources, etc., making effective use of Information & Communication Technology (ICT) for preparing the database of in-house experts to provide industrial consultancy and services.
7. To engage and utilize the services of superannuated active faculty members/researchers in research capacity building of talented young minds and promote mobility of researchers across institutions and R&D Labs.
8. To serve as nodal center for ideation and conceptualization of research topics/themes by organizing workshops and training programs and ensuring the integrity and ethical practices in research activities including clearance of bioethical committee wherever required.

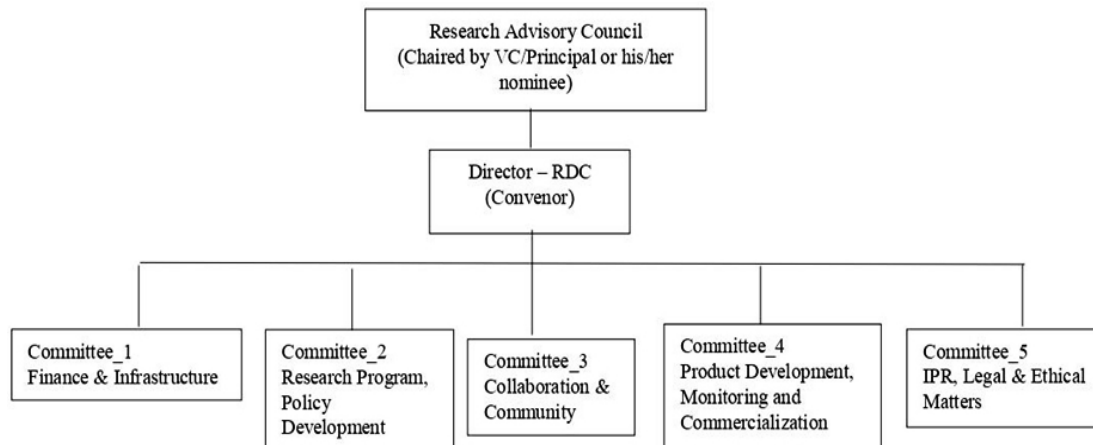
Functions

Since the UGC has launched an initiative to establish a RDC in HEIs with the mandate

for promoting quality research that contributes meaningfully towards the goal of a self-reliant India ("Atma-Nirbhar Bharat"), aligned with the provisions of NEP-2020, establishment of Research & Development Cell in SU would help to create a research ecosystem for reliable, impactful, and sustained research output. The essential elements of such an ecosystem, viz., generation of knowledge and facilitation of research, innovation and technology development for industrial & societal benefits, are addressed by human resource (researcher and faculty members), intellectual capital (knowledge and skills), governance (regulation and policies) and financial resources (funding and grants).

Governance

- An efficient governance mechanism, which ensures functional autonomy, transparency, accountability, adaptability by strengthening interlinkages to create a conducive research environment. SU can foster the human elements (faculty, staff, scholars and students), logistics (land, buildings, and facilities), knowledge resources (research equipment, project utilities, and consumables), fund flow, etc. through a steady, proficient, effective governance (Rules, Norms and Policies) and financial (Grants and Funds) management. Dedicated leadership and administrative structure for research, led by experienced researchers, are essential for establishing an effective and robust Research Governance in RDC at HEIs.
- The Research Governance of SU will have a Research Advisory Council (RAC) headed by the Vice-Chancellor or her/his nominee as the apex body of RDC. The Director, nominated by Vice-Chancellor among the distinguished researchers from the University, will head various committees to drive the governance. RDC may form multiple committees to smoothen its functioning with respective committee members nominated by the Director of RDC and approved by RAC. The organisational structure of RDC comprising of various committees for specified functions may be as under:



Administration

- Established organizational structure (Bodies, Authorities and Committees) will facilitate planning, implementation and monitoring of research activities in SU, formulate rules, regulations and policy frameworks for utilization of facilities and resources at SU.
- A strategy adopted to integrate multiple functional units can support institutional research under a single-window operational system for effective administration.
- The activities of RDC will be mentored and monitored by various committees for devising research models, technology, appraisal, foresight and review functions, mediating sectoral R&D progress and IPR protection.
- RDC should keep a close contact with Ministry Innovation Cell to make use of various innovative plans for facilitating the researchers.

Research Ecosystem/Collaboration

- A vibrant research ecosystem in SU aims to provide meaningful thrust for sustainable research and innovation and promote collaboration between government, universities, research institutes and industries.
- SU needs to build a sustainable research ecosystem that leads to consistent quality research outcomes and enhanced productivity.
- RDC in SU will act as a facilitator for networking and collaborative research with other national and international institutions working in inter-disciplinary, trans-disciplinary, and multidisciplinary research areas. Reformed administrative structure at SU can reach out to key industry players, research organizations, institutions, associations, NGOs, government bodies to forge strategic partnerships.

- SU needs to establish collaborations, teams/consortia, partnerships, and combined ventures for joint research activities through clustering institutions and organizations to facilitate the exchange of students, scholars and faculty members.
- There is a need to strengthen resource sharing in content and infrastructure both within the university and among universities, funding agencies, industries, corporates and government.

Information Management System

Research Information Management System (RIMS) may be established in the Central Library of SU:

- To collect and manage research-oriented information, databases, publications, research projects, fellowships, collaborations, patents, thrust areas, innovations etc. aligned with the institution's research policies.
- To provide a platform for accessing resource-centric information pertaining to human capital (Expertise), physical capital (State-of-Art Research Laboratories and Sophisticated Instrumentation Facility), and knowledge capital (Digital Library & Information, Intellectual Property Facilitation, Quantitative Methods & Data Analysis, Analytical and Consultancy Services).
- To provide a centralized and integrated database to manage issues related to and radioactive-safety approval clearances for use and disposal of biological, chemical and radioactive hazardous materials, protective equipment measures, surveillance of staff, appropriate trainings/workshops, etc.
- To create a blog or portal for Institutional Research Information and Institutional Repository and sign an MoU with UGC-INFLIBNET to access and upload the research information through Shodh Ganga, Shodh Gangotri, Shodh Sindhu, Shodh Shuddhi and Shodh Chakra.
- To implement the Innovation Management (ISO 56002:2019) as a common framework to develop and deploy innovation capabilities, evaluate performance, and achieve intended outcomes of global standards.

Human Resources

- The Director (RDC), the Conveners and members of various committees (nominated by the Director-RDC from/among the existing faculties with research credentials) and supporting administrative/technical staff would ensure smooth

conduct of the research activities in SU.

- Re-employing or designating superannuated faculty/scientists with exceptional research profiles and eminent faculty as Mentors/ Scientists/ Professor Emeritus on a selective basis will help to build a resilient research ecosystem. Distinguished faculties or research scientists grooming young talents can help replenish the void created as a result of superannuated faculty/researchers.

Research Promotion and Guidance

Research promotion activities at SU should be aligned with the mandates of various National Missions, SDGs, Start-up India leading to a Self-Reliant India (Atma-Nirbhar Bharat). Research Guidance from RDC will aim to encourage faculties to conceive ideas through enhanced industry-academia interactions and prepare research proposals for funding from various agencies. Organizing events like capacity-building programs (Research Methodology and Research Techniques) and specific research theme-based workshops and Research Internships will motivate the end-users (students, scholars, and faculties) to participate actively in the process of ideation and innovative research in emerging areas.

(1) Research Thrust and Clustered Areas

- Thrust areas for Research in SU should be identified, underpinning the societal needs and the availability of key resources, including in-house human resources, faculty research competencies, and support systems. This would enable SU to consider establishing a Center of Excellence (CoE) in these identified contemporary areas of research.
- Research Clusters and/or Regional Research Consortia prompted/formed by RDC to bring all researchers, faculty, students, scholars, and Post-Doctoral Fellows for joint high value (interdisciplinary and trans-disciplinary) research projects to avail national and international funding opportunities. Shared infrastructure and expertise will enable cross-fertilization of ideas and mobilization of resources. Further, forming Regional Research Consortia adds a synergistic advantage in finding solutions in inter-disciplinary, trans-disciplinary, and multidisciplinary areas.
- CoEs' can serve as Incubation Centres to transform innovative ideas into processes and products administered and monitored by the proposed RDC.
- RDC can also provide an avenue for community talent with prior learning/expertise

to engage in research and innovation activities of SU.

(2) Research Incentives and Recognition

- Incentives play a significant role in triggering and catalyzing research interest among scholars and faculties. Incentivizing quality publications and patents by students and faculty will have an enduring positive impact.
- Institution of Excellence Awards for accomplishments/achievements in the form of impactful quality research and/ or research-based teaching will further stimulate and invigorate the research and innovation activities of SU.
- RDC should also develop a policy focusing on identifying specific intensives for research faculty and develop a unique Research Career ladder for strengthening the mission "Research".

(3) Technology Development and Business Centred Facility

- The Technology Development and business-centered facility will be a hub for strategic partnerships/collaborations, industry-institute interface, sponsored or contract research, new knowledge generation, IPR, and patent services, venture capital, trade/market portfolio, technology transfer, and commercialization of research to facilitate innovation, incubation, entrepreneurship and start-up ventures.

Finance

- RDC can facilitate resource mobilization and create a Corpus for research and development from government, industry, and other funding agencies and channelize Corporate Social Responsibility (CSR) funds for sustenance and furtherance of research activities.
- RDC can explore venture capitalists and angel investors for funding in research and innovation.
- RDC needs to liaise with funding agencies, and track funding opportunities from industrial consortia.
- SU may make provision for research in the annual budget subject to the availability of funds.
- The corpus created for research could also support the seed funding for freshly recruited faculty for developing research facilities, publications and patenting.

Integrity and Ethics

- Regular initiatives by RDC will ensure that researchers understand the importance of integrity and ethics and comply with ethical codes of research and publishing practices at institutional, national and global levels.
- A standard plagiarism check should be mandatorily implemented and the requisite software in this regard made accessible to all researchers.
- RDC will sensitize the research community about dubious research and publishing practices and predatory journals.

Capacity Building

- RDC would play a crucial role in building the capacity of faculty and students to undertake research problems in line with the latest advances in diverse disciplines to push the boundaries of knowledge through publications and contribute to technological developments relevant to societal needs.
- It would also pave the way for SU to attract more research grants under norm-based funding, improve its accreditation ranking and enhance its brand image. Regular events such as refresher courses, workshops, trainings/internships, group discussions and seminars/conferences may be organized for capacity building.
- RDC would play a pivotal role in creating central R&D facilities with the provisioning of associated training/internship thereon.

Research Monitoring

- The current policy environment in India encourages the University to be responsible and accountable for research development and innovation activities through the creation of infrastructure, generation of resources, promotion of business, and facilitation of policy framework to nurture the culture of quality research by adhering to ethical practices.
- The RDC needs to monitor and oversee research progress, coordinate program, manage and facilitate optimizing resources, timely review of research activities for completion of the projects as per schedule.
- SU needs to formulate and adhere to specific quality benchmarks for research to meet the global/international standards.
- The RDC should conduct a quality review (SWOC Analysis) or internal evaluation of the research papers and suggest Scopus Indexed, Web of Science (WoS), or UGC-

CARE recognized journals for appropriate publications.

- The RDC must ensure that all the Research Labs in the institution fulfill the norms of Good Laboratory Practices (GLP) and Safety (Bio and Chemical) measures, recognized as QIP center and by the National Accreditation Board of Laboratories (NABL).

Initiatives of Sikkim University for establishment of Research and Development Cell as per UGC Guidelines

With reference to the Guidelines of UGC for establishment of Research and Development Cell in Higher Education Institutions, Sikkim University has established Research and Development Cell (RDC) vide Notification OO-130/2023, dated: 17.04.2023.

- The Research Governance will have a **Research Advisory Council (RAC)** headed by the Vice-Chancellor.
- The Director, nominated by Vice-Chancellor among the distinguished researchers from the University, will head various committees to drive the governance.
- RDC may form multiple committees to smoothen its functioning with respective committee members nominated by the Director – RDC and approved by RAC.
- The organisational structure of RDC comprising of various committees for specified functions may be as under:

Research Advisory Council (RAC): Chairperson: Vice-Chancellor, Sikkim University

Committee 1: Finance & Infrastructure

Committee 2: Research Programme & Policy Development

Committee 3: Collaboration & Community

Committee 4: Product Development, Monitoring & Commercialization

Committee 5: IPR and Patent

Guidelines and Modalities of each Committee (1 to 5) will be framed by the Convener (Director) and members of respective committee for smooth running of Research and Development Cell in Sikkim University after the general Guidelines of RDC of Sikkim University will be approved by the Academic Council.